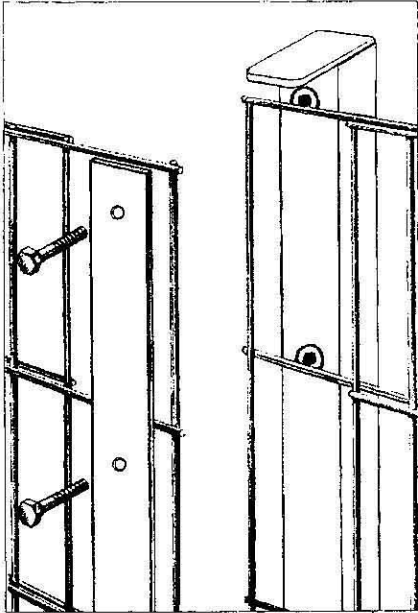


THE LEGI-R FENCE SYSTEM USES THE LEGI MESH PANEL, ALONG WITH THE NOW CLASSIC R POST. THE BREAKTHROUGH SECURITY FENCE HAS THE BEST IN DESIGN, INSTALLATION, AND QUALITY COMPONENTS. COMBINED WITH A CONTEMPORARY LOOK LEGI-R FENCE OFFERS A PERFECT SOLUTION FOR ANY SITE. HOT-DIP GALVANIZED AFTER FABRICATION, COATED WITH UV STABLE, THERMALLY SET POLYESTER POWDER COAT, LEADS THE INDUSTRY IN CORROSION PROTECTION.



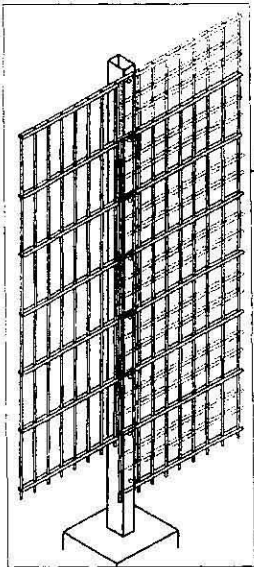
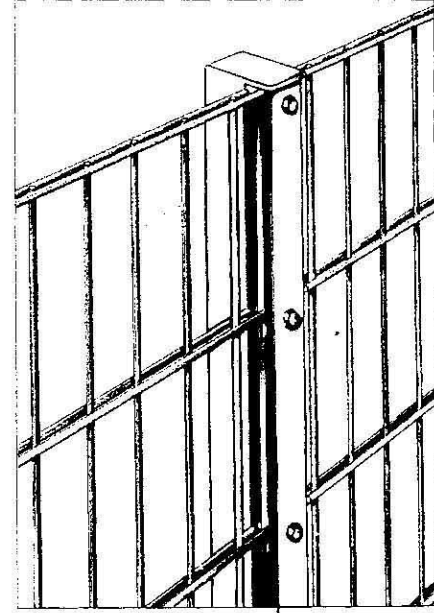
LEGI-R ASSEMBLY VIEW

Two overlapping mesh panels, post and backing plate – for bolts every 8".



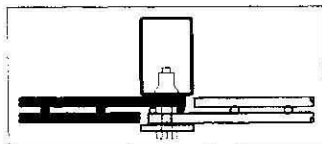
SECTION VIEW

Standard on-center post spacing of 98.4".



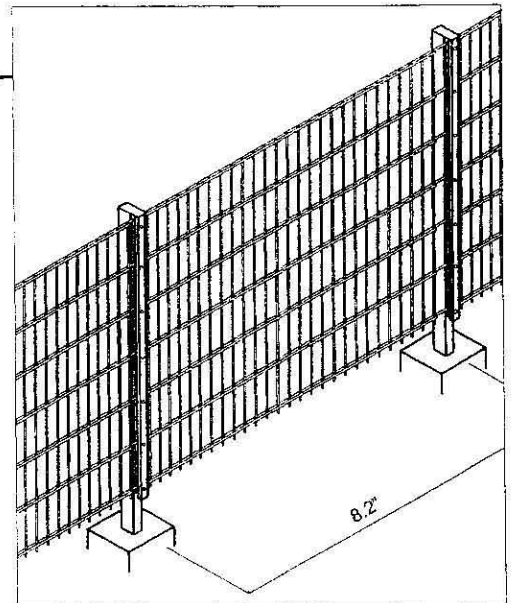
STEPPING

Up to 8" stepping allowed with no extra tools or hardware.



LEGI-R POST PLAN VIEW

Post, clamping tube and two overlapping mesh panels.



The R post is 60mm[2.36"] x 40mm[1.6"] tubular steel, backing plate 5mm[.20"] x 40mm[1.6"], LEGI mesh is constructed of 6mm [.24"] vertical wire and 8mm(.31") double horizontal rods, welded crosswise, with standard 50mm[1.9"] x 200mm[7.9"] openings, others sizes available. Heights, are 2' to 40", in 8" increments, heights over 7.3' use 2 or more panels. All parts are hot-dip galvanized after fabrication. Matching gates are also available.

